

**IDFB Technical Commission,
in Lu'an China on June 16, 2019**

REPORT OF ORIGINAL PROJECT IN JAPAN

JDFA JAPAN DOWN PRODUCTS CORPORATIVE ASSOCIATION

PRESENTED BY JUNYA KUROYANAGI

MR. TOSHIKASTU KAWADA

AGENDA

- 1) Safety and Health Testing Method
- 2) Glue Down evaluation test
- 3) Plan for preparation of revised JIS L 1903
- 4) Traceability Audit System in Japan

SAFETY AND HEALTH TESTING METHOD

NEW SAFETY AND HEALTH TESTING METHOD

We are preparing Safety and Health committee meeting to provide safety down. The committee was discussed following new tests and standard.

Safety Cheick (Toxin test)

Test for checking whether chemicals remaining on down have any effect to health.

Testing method: Zebrafish Embryo Toxin Test

Health Cheick (Viable bacteria count test)

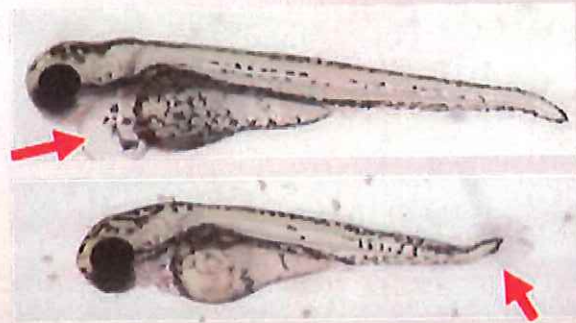
Count the number viable bacteria remaining on down.

Testing method: Viable bacteria count test

SAFETY CHECK ZEBRAFISH EMBRYO TOXIN TEST

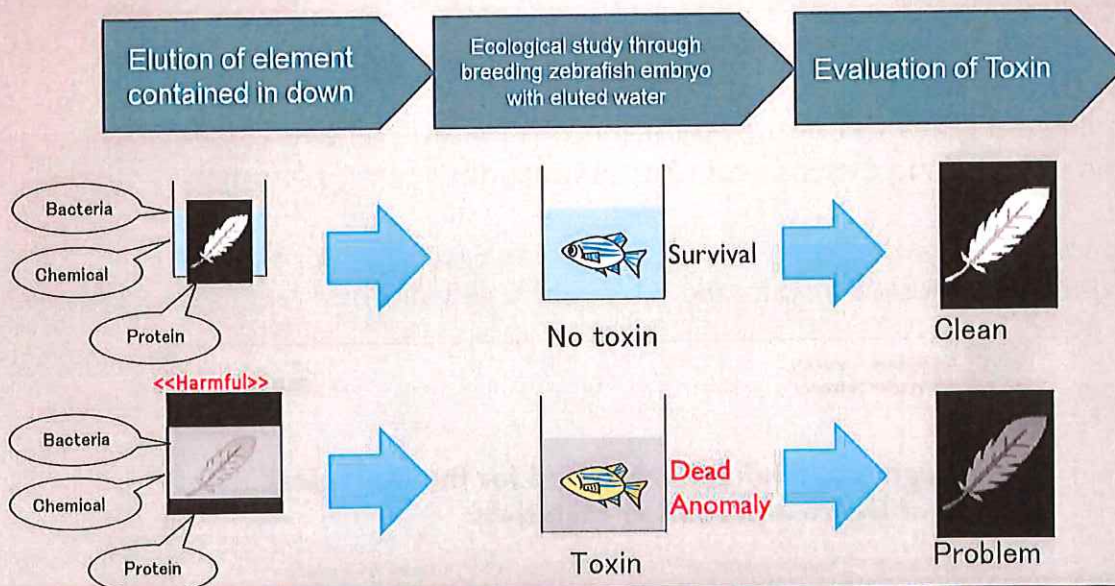
No Toxin

Toxin

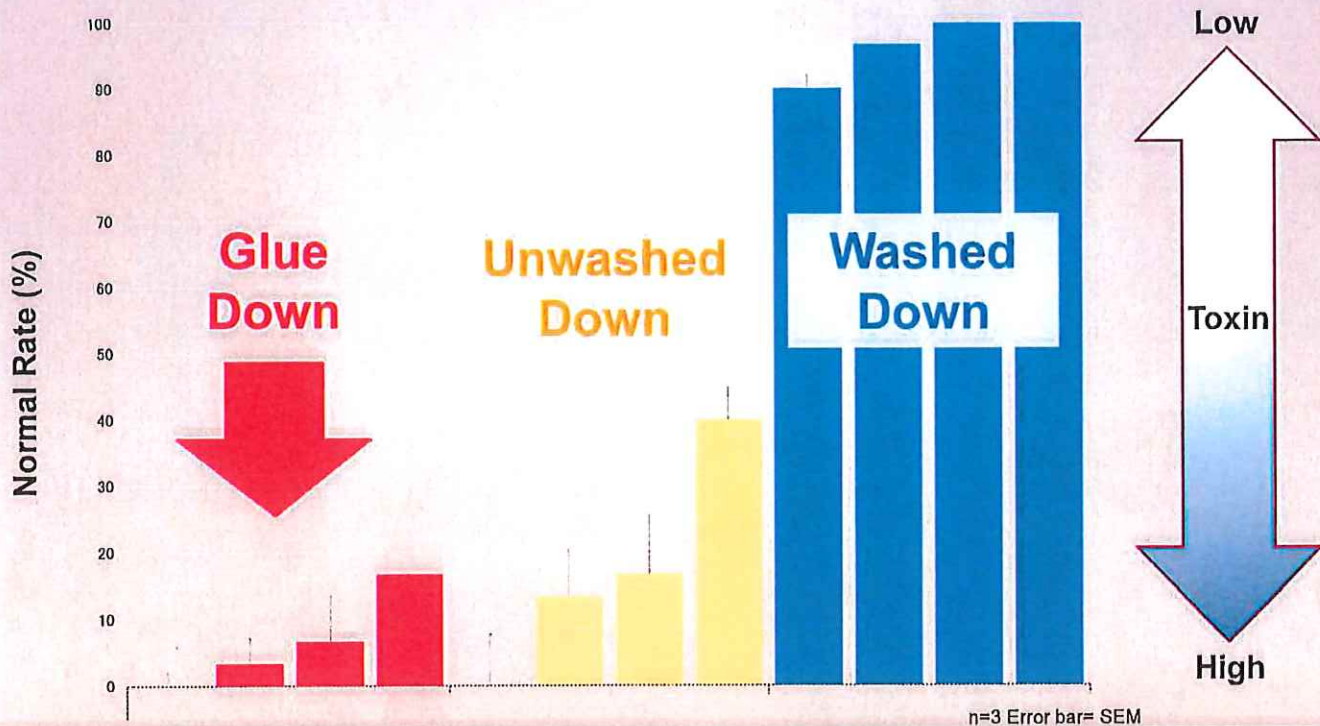


Zebrafish Embryo Toxin Test

This down safety assessment technology was established on the basis of toxin assessment using zebrafish which was prepared in 2014 under the leadership of ECVAM (European Center for the Validation of Alternative Methods).



Zebrafish Embryo Toxin Test Result



All Glue Down and unwashed down result has been high toxin.

Zebrafish Embryo Toxin Test

The results of recently-conducted Zebrafish Embryo Toxin Test for down products revealed strong toxin on **Glue Down and unwashed down**. Furthermore, no toxin was found on washed down.



We confirmed that whether unwashed down materials have undergone appropriate washing process can be assessed by using zebrafish.

It was published on "International Journal of Molecular Sciences" under the title "An Integrative Evaluation Method for the Biological Safety of Down and Feather Materials"



International Journal of
Molecular Sciences



Article

An Integrative Evaluation Method for the Biological Safety of Down and Feather Materials

Toshikatsu Kawada ^{1,*}, Junya Kuroyanagi ^{2,†}, Fumiyoshi Okazaki ^{3,4,5}, Mizuki Taniguchi ³, Hiroko Nakayama ^{5,6}, Narumi Suda ², Souta Abiko ⁷, Satoshi Kaneco ⁸, Norihiro Nishimura ^{5,6} and Yasuhito Shimada ^{4,5,9,*}

HEALTH CHECK VIABLE BACTERIA COUNT TEST



Viable Bacteria Count Test

The count of viable bacteria means the count of mesophilic aerobic bacteria growing under testing conditions.

The testing method is as follows:



Prepare sample for glass vial



Add solvent and shake 30 times



Add 1ml for cultivation (Pouring Method)



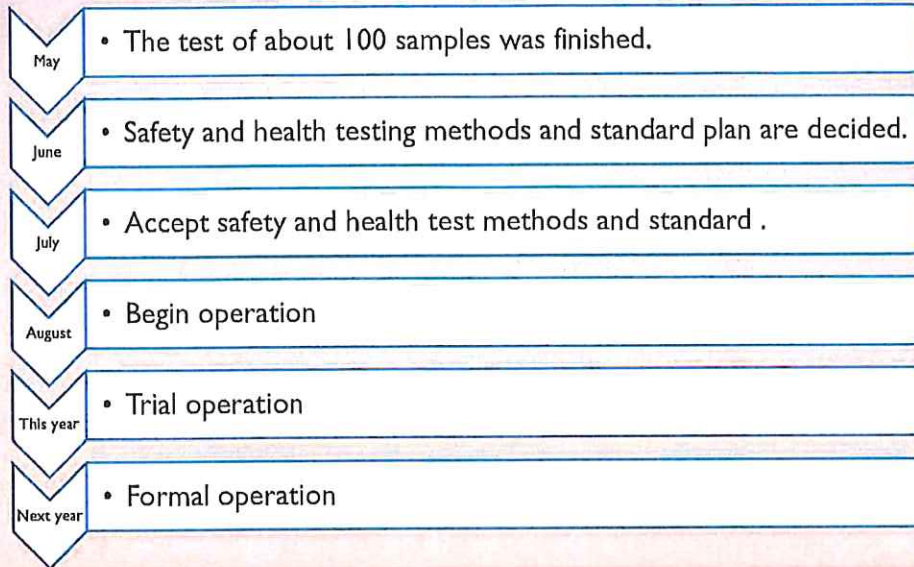
Incubate 48 hours at 37°



Bacterial count measurement



SCHEDULE OF 2019



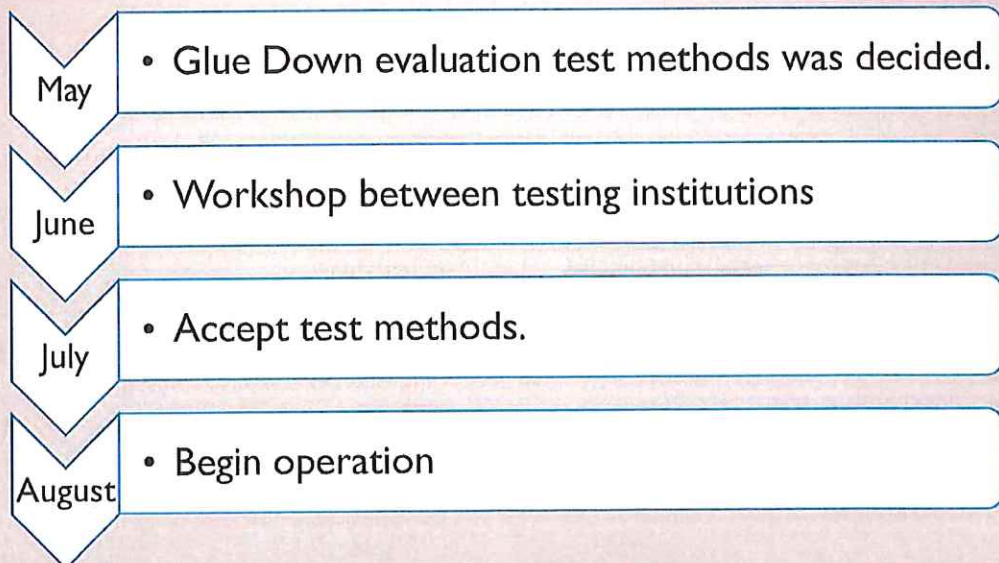
GLUE DOWN EVALUATION TEST

GLUE DOWN EVALUATION TEST

Established the testing method for detecting fake down, such as Glue Down

Along with the Safety and Health Committee, the Technical Committee examined and recently published the “Testing Method for Detecting Fake Down, such as Glue Down.” It is becoming even more difficult to detect Glue Down, because the method of deception is becoming more sophisticated every day. Accordingly, we are adding testing items to the testing method, as needed.

GLUE DOWN EVALUATION TEST



PLAN FOR PREPARATION OF REVISED JIS L 1903

PLAN FOR PREPARATION OF REVISED JIS L 1903

In recent years, the quality of down imported into Japan is decreasing. It is become difficult to value the down in the present JIS L 1903.
We plan the revision work of the several items.

1. Down Definition

Least two barbs connected at one point

It is superficial in two of barbs and is not three-dimensional.



Revision plan

Least **three** barbs connected at one point

It is three-dimensional.



superficial



three-dimensional

PLAN FOR PREPARATION OF REVISED JIS L 1903

2.Fill power (Down Power)

Start sample volume 35g.

Fill a measuring container with a 30 g (\pm 0.1g) sample.

Even if this contains many particles, it disappear during processing.

The true performance is not checked in this.



Revision plan

Start sample volume 30.0g.

Fill a measuring container with left-over all sample.

The true performance is checked in this.

We will make a preparatory committee by the end of this year.

TRACEABILITY AUDIT SYSTEM IN JAPAN

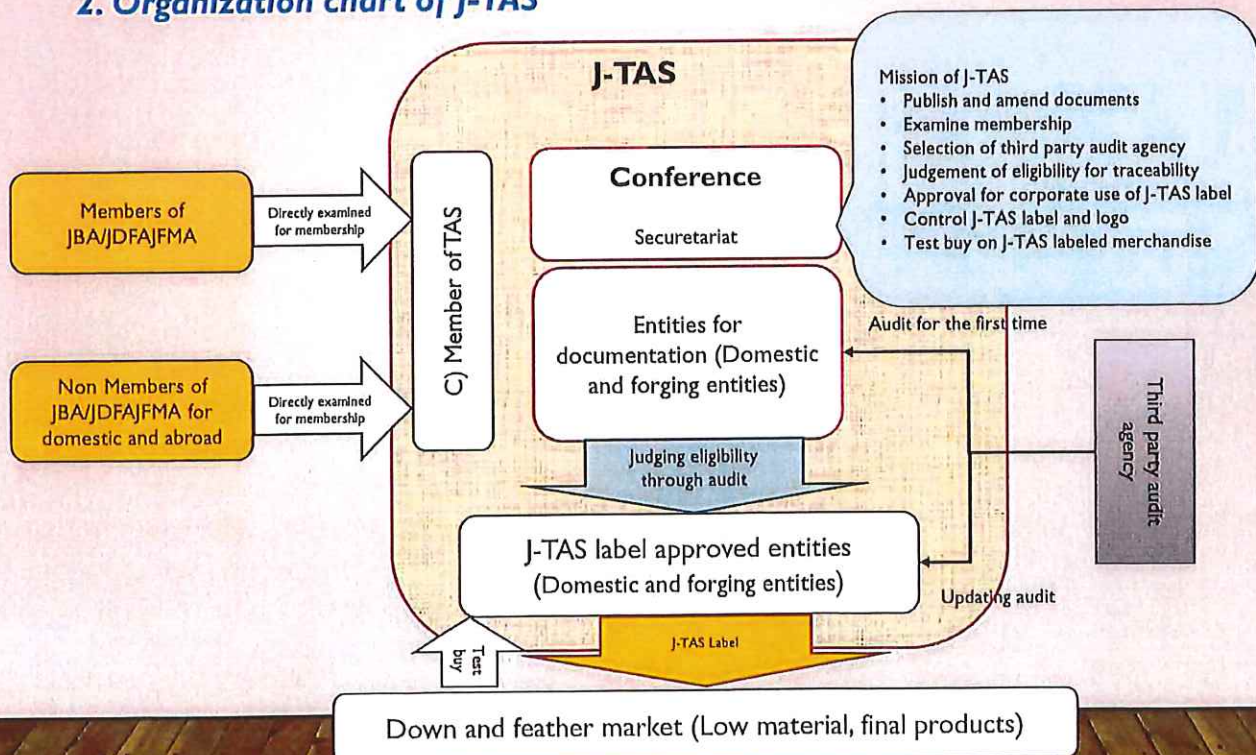
JBA Traceability Audit System (J-TAS)

JBA Traceability Audit System was put into operation.

Effective 2019, the JBA Traceability Audit System (J-TAS) was put into operation as the final measures to counter origin deceptions. By virtue of guidance provided by the Ministry of Economy, Trade and Industry and for the purpose of disseminating this system, J-TAS Committee was established within the Japan Bedding Goods Association "JBA", the upper organization of the Japan Down Products Corporative Association "JDFA" which is the body closest to wholesalers and retailers. JDFA has been granting full support to the J-TAS Committee.

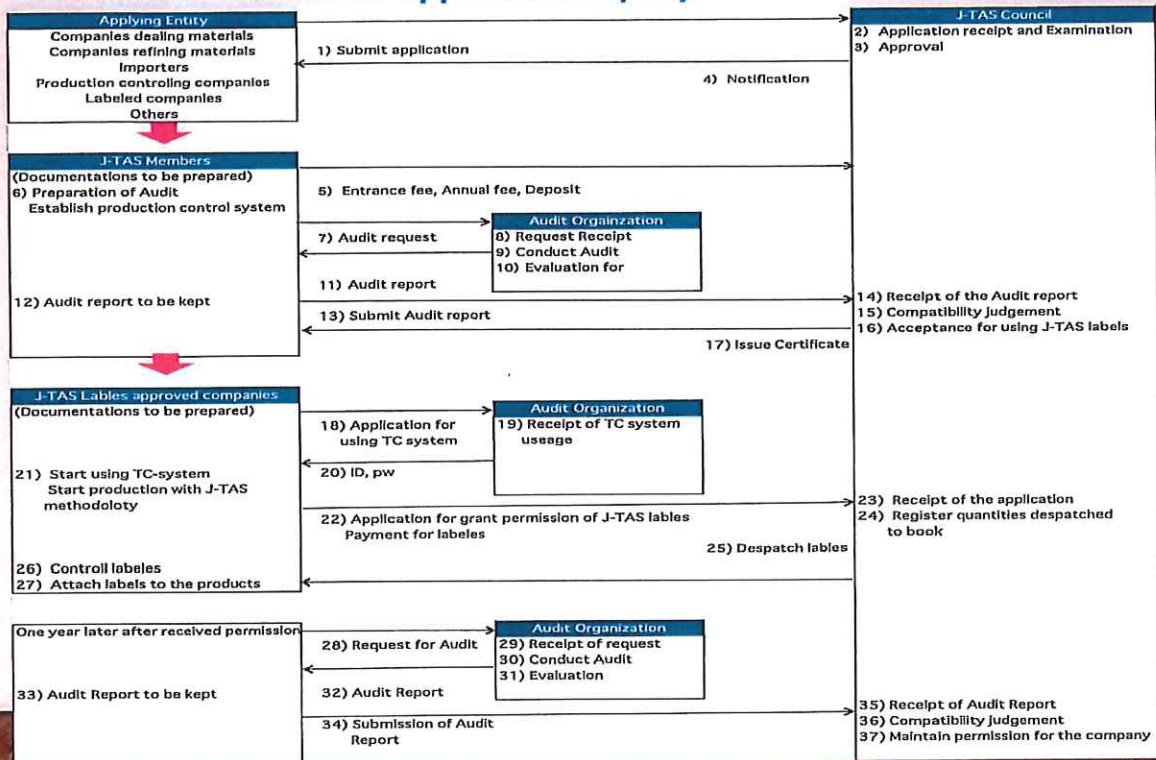
JBA Traceability Audit System (J-TAS)

2. Organization chart of J-TAS



JBA Traceability Audit System (J-TAS)

3. Process to become an approved company



* 18), 19), 20) meant for those needed to control documents for TC System

JBA TRACEABILITY AUDIT SYSTEM (J-TAS)

Please access the J-TAS HP for details.

<http://www.jba210.jp/english/>